

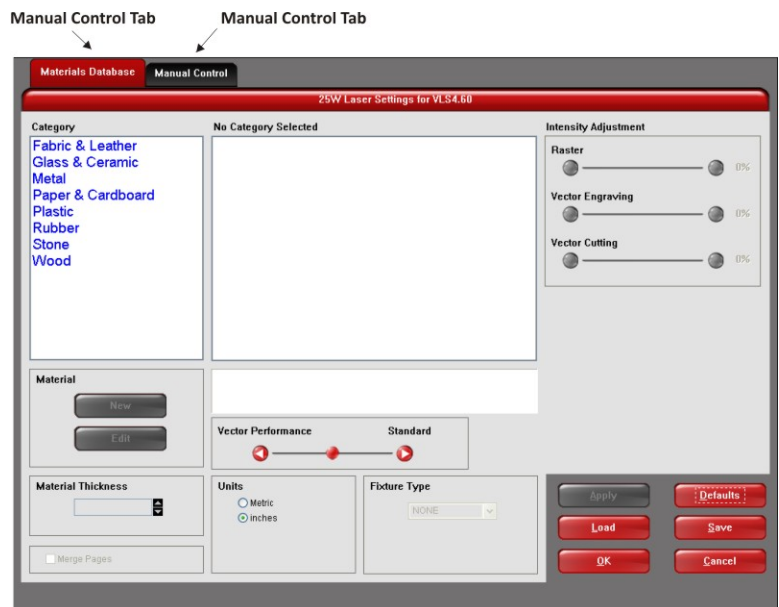
Last Updated: 06/12/2010

File: ULSAdvanced.exe

Downloading the File & Internet Security

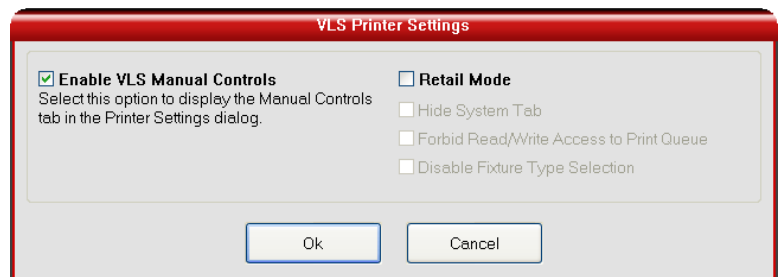
The download file is in the zip format. You will have to unzip it before using. The file inside the zipped file is the **ULSAdvanced.exe** file. If you try to run the **ULSAdvanced.exe**, and find files are missing, you will have to download from a less secure internet connection or have the factory send you a new driver disk.

If you have only a single tab, the Materials Database tab in your print driver, you can run the file, **ULSAdvance.zip**. It turns on/adds the Manual Control Tab



Installation

After clicking on the unzipped file [**ULSAdvanced.exe**], you see this dialog. Click on **Enable VLS Manual Controls**, and **OK**. Now when you go to your Settings, you see the addition of the Manual Control tab.



Using the Materials Database

This tab is for those who want it quick and easy. All the operator has to do is pick the material settings, hit **Apply**, then **OK** and the file will be sent to the laser.

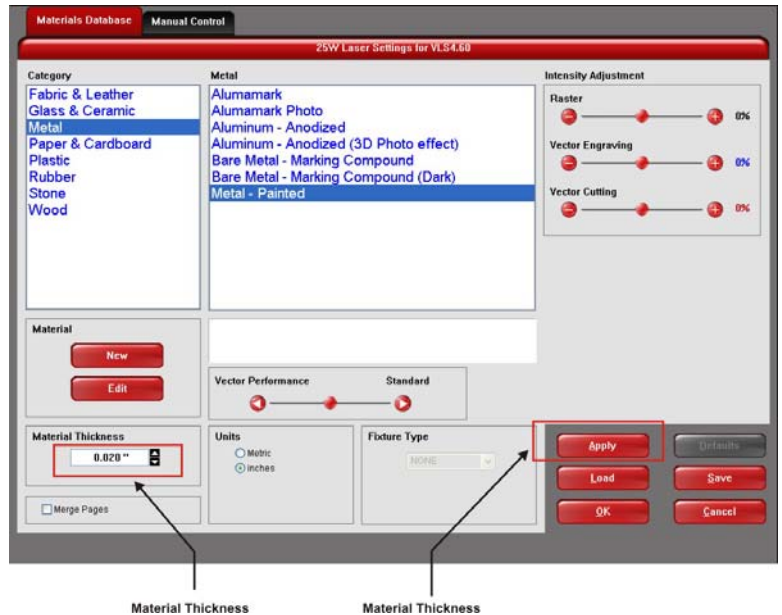
Using the Manual Control

The Manual Control is for jobs that need more control. However, I prefer to use both of these tabs. After I send a job to the printer, I go to **Properties** from the **Print Dialog**.

With the **Materials Database** tab selected, I pick my materials. For this example I am use black trophy brass.

- Select the Category, Metal
- Select the Metal type, Metal-Painted
- Enter the Material Thickness
- Click the Apply icon. Note: Do not click on the OK icon

You Settings dialog should appear as shown to the right



Next, click the manual control tab. The settings in the Manual Control are for the Painted Metal material properties. You now have more options to adjust the material property settings

