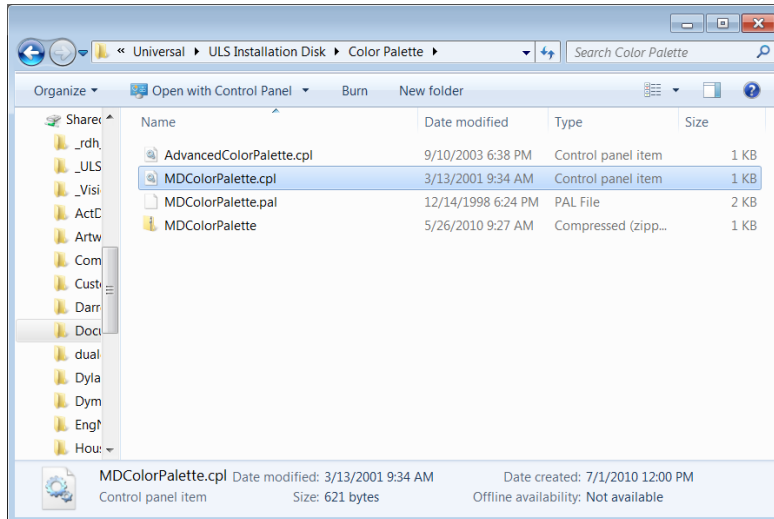


Quick Tip for Installing ULS CPL in CorelDraw

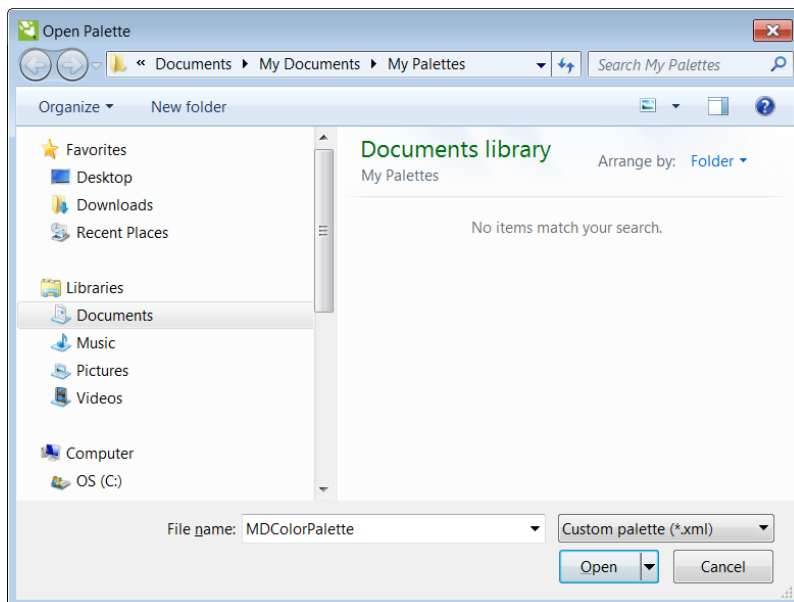
First, let's get rid of any color palettes that exist. In CorelDraw, go to Window > Color Palette > None.

Next go to the directory where your Advanced Color palette is located. I found mine on the ULS Installation Disk in the directory Color Palette.



Right click on the file and from the pop up menu select Copy

Next, in CorelDraw, go to Windows > Color Palettes > Open. This is the Open Palette dialog of Corel X5. In other versions, you may see other palettes.



Right click inside this dialog and select PASTE in the popup menu. The CPL will be pasted. Before you leave select the new CPL you have pasted, and press OPEN.