

CIRCLE MONOGRAM OUTLINE

FONT PART NUMBER: XX - 90054 • FONT FORMAT: ALL SYSTEMS

- NOTES: • Cutter suggestion: Use a diamond head cutter.
 • To engrave a border, first type the characters, then type the border keystroke.

A =	N =	a =	n =	1 =	? =	<> =
B =	O =	b =	o =	2 =	! =	" =
C =	P =	c =	p =	3 =	# =	@ =
D =	Q =	d =	q =	4 =	% =	* =
E =	R =	e =	r =	5 =	/ =	* =
F =	S =	f =	s =	6 =	(=	< =
G =	T =	g =	t =	7 =) =	* =
H =	U =	h =	u =	8 =	. =	shift-@ =
I =	V =	i =	v =	9 =	: =	Sys I, II =
J =	W =	j =	w =	0 =	; =	£ =
K =	X =	k =	x =	& =	, =	Wizzard =
L =	Y =	l =	y =	\$ =	' =	alt-96 =
M =	Z =	m =	z =	+ =	= =	Super-Pro =

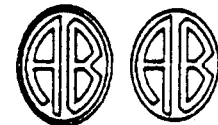
ABCDEFGHIJKLMNOPQRSTUVWXYZ



ABCDEFGHIJKLMNOPQRSTUVWXYZ



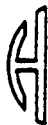
ABCDEFGHIJKLMNOPQRSTUVWXYZ



KEYSTROKE ASSIGNMENTS FOR CIRCLE MONOGRAM FONTS

The Circle Monogram Font allows you to create a variety of decorative monograms. These can be used alone or with a variety of borders for ornamentation. The circle monogram fonts have 3 character types: left, center, and right.

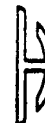
Left
Character



Center
Character



Right
Character



These character types can be used alone, or they can be combined to produce an attractive, circular design. Shown above are some samples of these characters. If, for example, these 3 characters were engraved together, they would produce a 3-initial Circle Monogram.

Typing the
Characters

To use the Circle Monogram font, you must know which characters on the keyboard produce each of the characters or symbols in the font. On the last page, you'll find a Keystroke Sheet, which shows which keystroke (key on the keyboard) yields (or will engrave) the character shown.

Special Symbols



The most common symbol used in designing monograms is the diamond symbol. It is engraved by typing a pair of quotation marks in your line of copy, usually between the left and right Circle Monogram characters. The keystroke you use for typing this character is shown on the Keystroke Sheet.

Surrounding Letters
with Boxes, Ovals,
and Circles.

Each of the character combinations you type can be surrounded with decorative shapes. Shown below are some samples, with an explanation on when you can use them. The keystrokes for each of the symbols are located on the Keystroke Sheet.

Single Oval



Here's an example of the Single Oval shape. It can be used with a left and right letter only. To set up the copy, type the left and the right character, followed by the asterisk (*).

Double Oval



The Double Oval shape can also be used to surround letters. Again, only a left and right letter can be used. To type the copy, type the characters, followed by the asterisk and the hyphen (*-).

Single Circle



The Single Circle can surround a left, center and right character. To type the copy, type the keystrokes followed by the left Kern Key.

Double Circle



A Double Circle shape can surround a left, center and right character. To type the copy, type the keystrokes, followed by a left and right Kern (<>).

Box



You can also frame 3 center characters with a double-lined Box. Each center character within the box must be separated with a space. To draw the Box, end the line of copy with an "at" sign (@).

Wreath



A Wreath can surround left, center and right monogram characters. To produce a Wreath, type the keystrokes, followed by a pound sterling sign (£) on the Wizzard, or Shift @ on the Systems I and II.