

Vision Windows Software

Transferring Logos from CorelDRAW – The Basics

Before you Start

Terms used in this lesson which are underlined (i.e. vector), are defined at the end of the lesson.

CorelDRAW is one of the most popular graphics programs used in the engraving industry. It offers many useful tools and options for creating vector logos and artwork used by engravers.

CorelDRAW can support both vector and bitmap images. Most engraving software only supports vector images. For bitmap images to be used by the engraving software, they must first be converted to vector format using the Trace function in CorelDRAW, or using the various vector tools to outline the image.

Once you have imported, loaded, or created a vector image into CorelDRAW, you can easily use the export functions and save the image as a HPGL file. These files are often referred to as PLT files, as their file extension is PLT.

Quick Start

Here are the Quick Start steps in exporting my big_dog file to the HPGL format. (A more detailed overview of this process is shown after the Quick Start).

Exporting the file from CorelDRAW

1. From the CorelDRAW FILE menu, select EXPORT.
2. In the EXPORT DIALOG enter the data for the following fields

Save In: [The directory your program looks for logos]

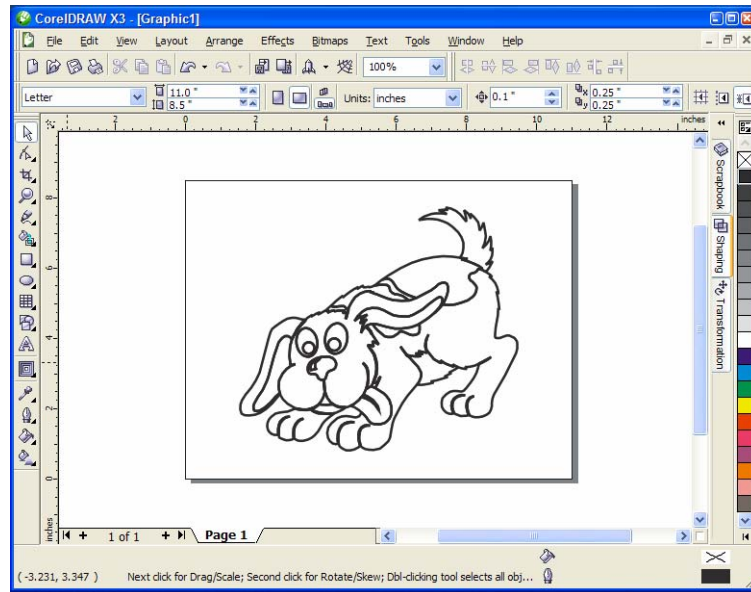
Filename: [big_dog, or the filename of your choice.]

Save as Type: [PLT – HPGL Plotter File]

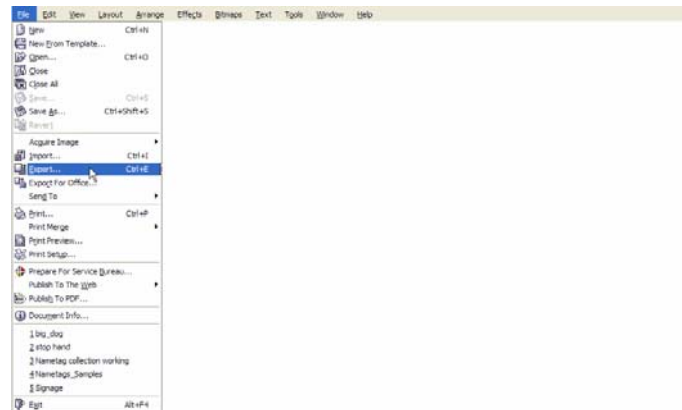
2. Press [ENTER].
3. At the HPGL EXPORT dialog, press [ENTER]

Detailed Steps

Here are the detailed steps for exporting a file in the PLT format for use in your engraving software. The screen to the right is the CorelDRAW X3 screen with my big_dog. I used the PET00014.CDR file on my CorelDRAW 8 clipart.



1. From the CorelDRAW FILE menu, select EXPORT,

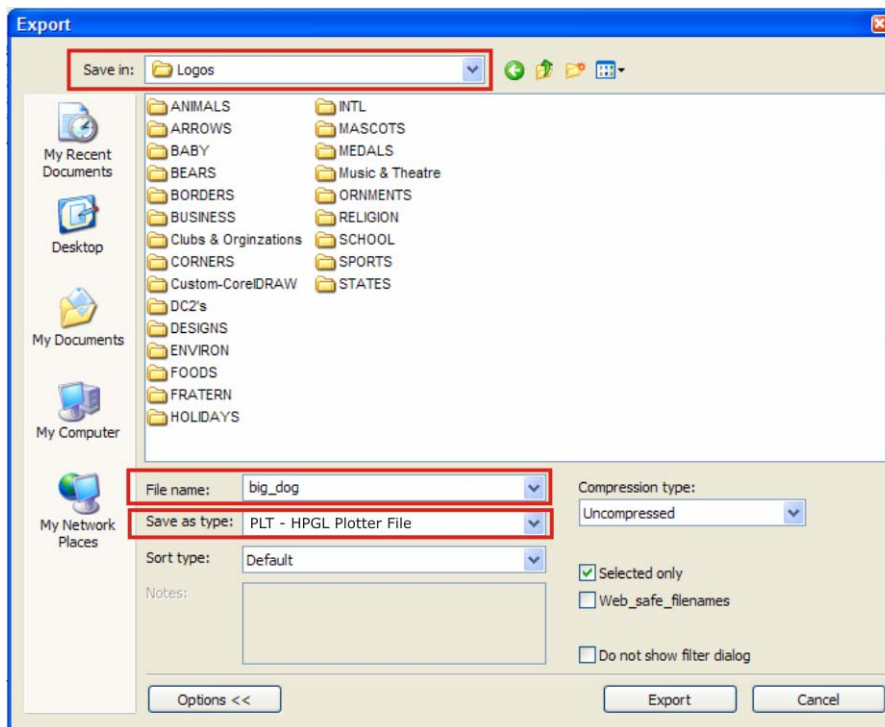


or use the EXPORT icon on the STANDARD PROPERTIES BAR.



EXPORT (CTRL+E)

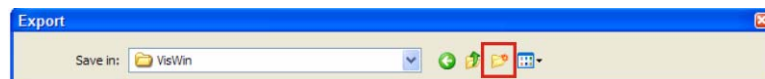
The EXPORT FILE dialog is shown below:



The default in the EXPORT dialog's **Save In:** is MY DOCUMENTS. This is the location CoreIDRAW will save the PLT file.

Using the down button, change from MY DOCUMENTS to LOCAL DISK (C). Within this drive click on the VisWin folder. And, under the VisWin directory, select Logos.

I like to create a separate logo for all of my custom files which I export from CoreIDRAW. When the **Save In:** displays Logos, I clicked the Create New Folder icon,



and renamed New Folder to Custom-CoreIDRAW.

- Next, change the **Filename:** to the file I want displayed for the logo name.

Filename: big_dog

If you didn't save the file while in CoreIDRAW, GRAPHIC1 is used as the default name.

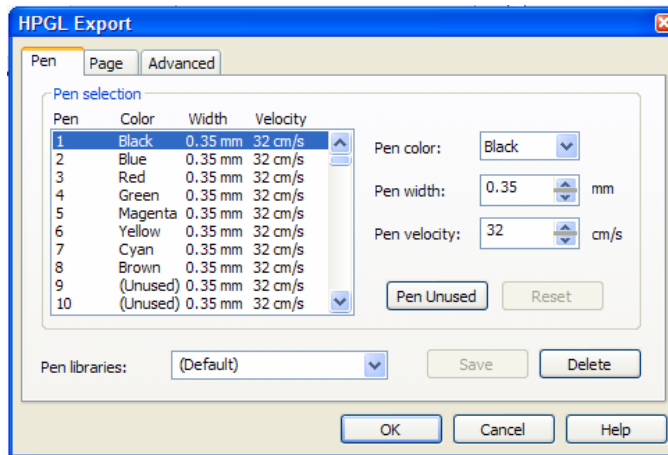
While Windows XP allows the use of 254 characters in a filename, the Vision windows dialogs only shows approximately 18 characters. You can scroll within the filename while in Vision to view the entire filename, but with numerous files all with the same first 18 characters, it gets confusing

- Save as Type:** PLT – HPGL Plotter File

In CorelDRAW9, the HPGL file format was not a default format. It had to be loaded as a custom option. And some versions such as CorelDraw 9 Office Edition, a scaled-back version of the popular drawing packages of CorelDRAW not have this option.

In the lower left corner of this dialog, there is an options button. Click on this and you have the option of exporting selected items vs. exporting all of the objects on the drawing page. Make sure the object(s) to export is selected before starting to EXPORT.

4. Press [ENTER]. The next screen is the HPGL EXPORT dialog.



This dialog was used to change the colors for pen plotters and is not normally used. However, the advanced tab is where you can add fill and hatching to logos. Using this option will be discussed in detail in other lessons.

5. Press [ENTER].

The file is exported and ready for use in your engraving system.

Notes

If you are ever transferring a logo from a floppy disk or a USB drive, always copy it to your computer's hard drive (i.e. C:\VISWIN\LOGOS) before using it.

Here's a few CorelDRAW Help Notes for some of the changes that occur to your drawing file when exporting HPGL files

- Only the outlines of objects are exported to the PLT file format.
- Dotted lines, dashed lines, and arrowheads are mapped to standard line types of the PLT file format.
- Bézier curves are converted to line segments.
- Outline thickness and calligraphic settings are lost.

TERMS

bitmap image

An image composed of grids of pixels or dots.

Export

You can export and save images to a variety of file formats that can be used in other applications.

HPGL format

Plotter file

This file type is a standard HPGL plotter file. Most CAD programs can output to this type of file. The file extension that is supported is .PLT.

vector image

An image generated from mathematical descriptions that determine the position, length, and direction in which lines are drawn. Vector graphics are created as collections of lines rather than as patterns of individual dots or pixels.

USB drive