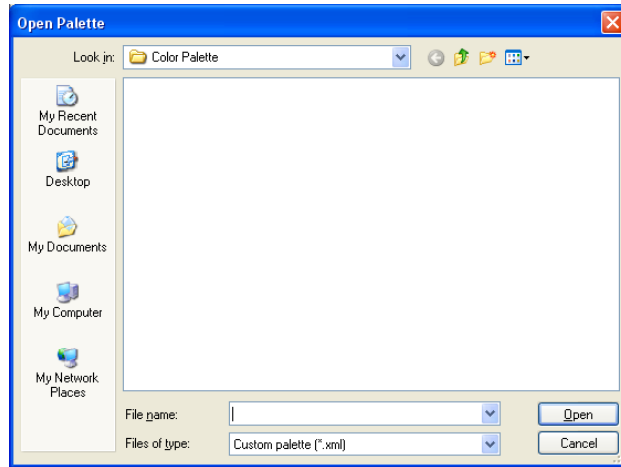


# CorelDraw X5 Page Setup for ULS

## Windows XP, Windows Vista

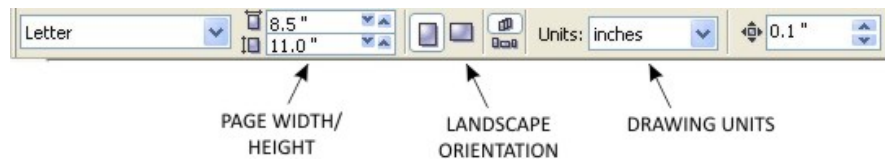
**Note: CorelDraw X5 was optimized for Windows XP/Vista32&64bit and Windows 7, 32 & 64bit.**

1. If you have not already done so, install CorelDraw on your computer.
2. Open CorelDraw and start a new graphic.
3. Place your ULS CD Driver disk into your CD drive. In the main pull down menu of CorelDraw at the top of the screen, click on **Window**, then **Color Palettes**, and then click on **None**. This will clear any existing color palettes from the Drawing Page. Once again click on the **Window** pull down menu, **Color Palettes**, and then click on **Open Palette**.
4. The Open Palette dialog should appear. In **Look In:** of the dialog, go to your CD drive with the ULS Driver disk, and click on the Color Palettes folder.
5. In the Open Palette dialog, the default **File of type:** is **Custom Pallet [\*.xml]** In the drop down, select **Legacy Custom Palette [\*cpl]**.
6. Double-click on the **ULS.CPL** file. The ULS color palette will now appear on the right side of the CorelDraw Drawing Page.

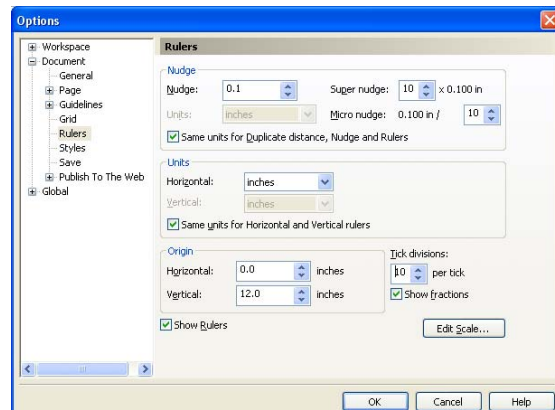


Note: You can use either the ULS.CPL palette or the ULS.PAL palette. To use the ULS.PAL palette you must first select the PAL file type in the **File of type** of the open palette dialog.

7. On the **Property Bar: No Selection** (below), click on the landscape orientation (the sideways rectangle).

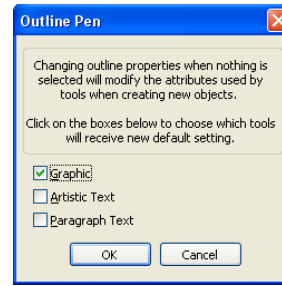


8. If you would like the **Drawing Units** in metric, choose millimeters from the drop down list. Now type in the page width and height that matches your laser platform.
9. Next, you need to adjust the origin of the vertical ruler (on the left side of Drawing Page) to match the rulers of the laser system. Double-click directly on the vertical (side) ruler. The Options dialog will appear. Under **Origin**, and in the **Vertical:** box, type in the same height value as you did when you set up the page height in the previous step. For example, **12.0** inches for a VLS 3.50 machine. If you would like the scale to be displayed in tenths as on most rulers, choose **10 per Tick** in the **Tick Division** drop-down list box.

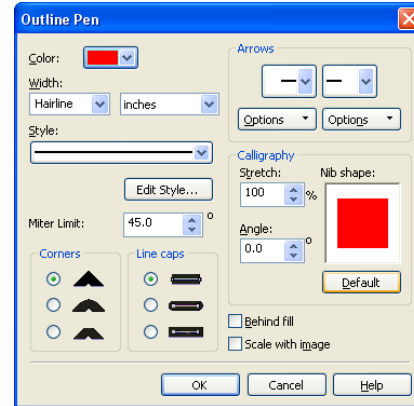


10. The next step is to set the default value for the line width and color when drawing graphic objects. Press the **[F12]** key, or click on the outline tool, and in the flyout choose the outline pen dialog.

11. With **Graphic** being the only one selected, click **OK**.



In the Outline Pen dialog, click the down arrow in the **Color** dropdown to expand the list and click on the **Red** swatch of the color palette. Click the down arrow in the **Width** drop down box and click **Hairline**. The units can be **inches**, **millimeters** or anything else you prefer. Click **OK** to close the Outline Pen dialog.



12. In the top menu, click **Tools**, and then click **Color Management**. Then select **Default Settings**. Click on the down arrow for **Presets** on the top of the page. Click **“Simulate Color Management Off”** from the dropdown menu, and then click **“OK”**.

13. Finally, at the top of the screen, click on **“Tools”**, then **“Save settings as Defaults”**.

14. The setup defaults for CorelDraw X5 are now complete. Whenever you start a new document, all of the default settings that we had setup will automatically apply to the new document.