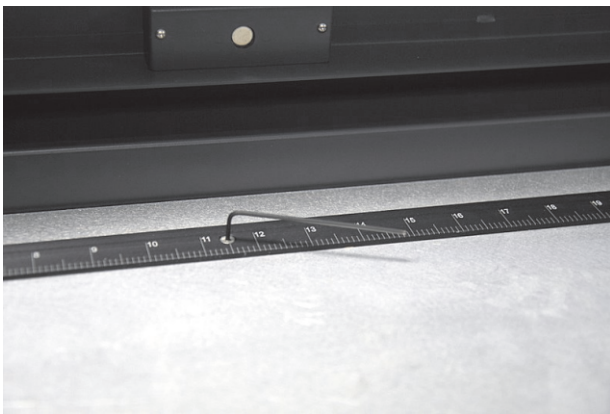


Realigning the XY Rulers

1. Tools Required:

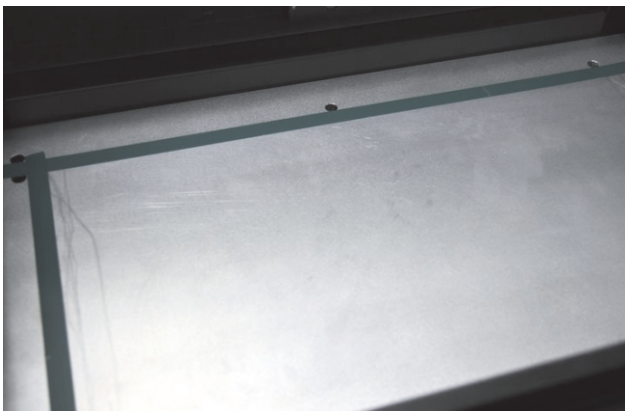
- * Tape (preferably masking tape or electrical tape)
- * 5/64" allen wrench
- * 5/16" nut driver or socket wrench



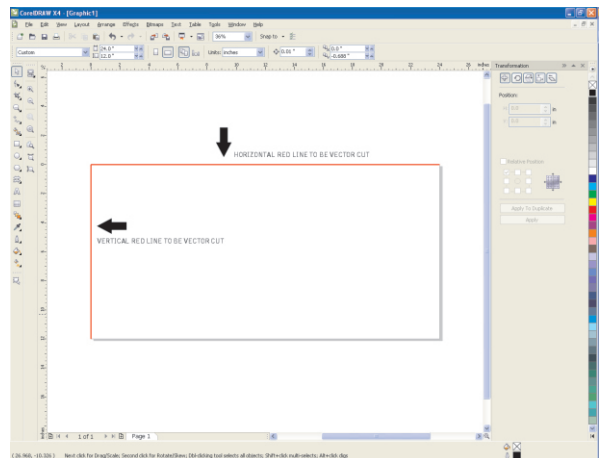
Remove the screws on both X and Y rulers.



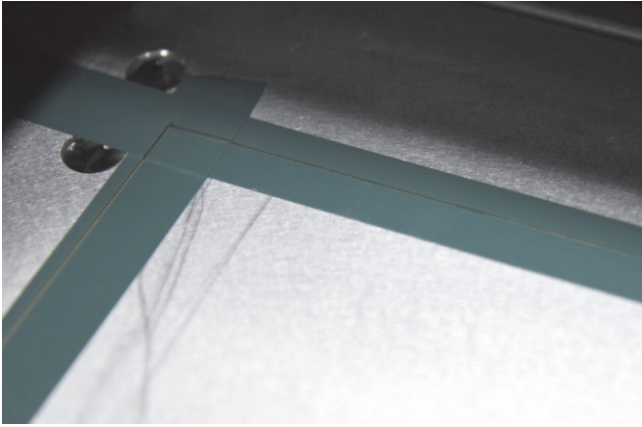
Remove both rulers completely from the table.



Place tape down where rulers once where. Making sure to OVERLAP the approximate edge of where the rulers will be placed.



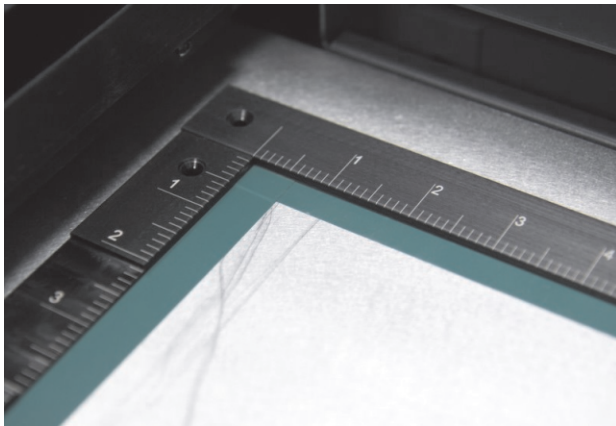
In your graphics software, draw 2 vector lines the full length of your rulers. Place them at .001 vertical and -.001 horizontal. Lines will not engrave if placed directly on the 0 position.



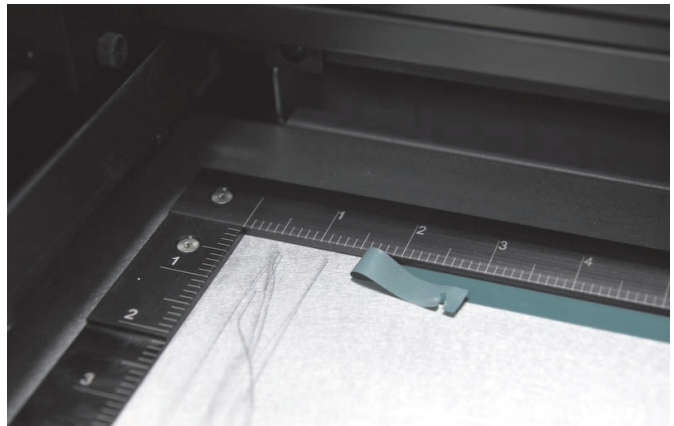
Now, vector cut these lines. You are going to use low power, as all you are trying to do is cut through the tape placed on your table.



Remove the TOP and LEFT portions of the tape that was just cut.



Replace the rulers and position them against the tape that is remaining on the table. Replace screws and tighten.



Remove the remaining tape and you are complete.