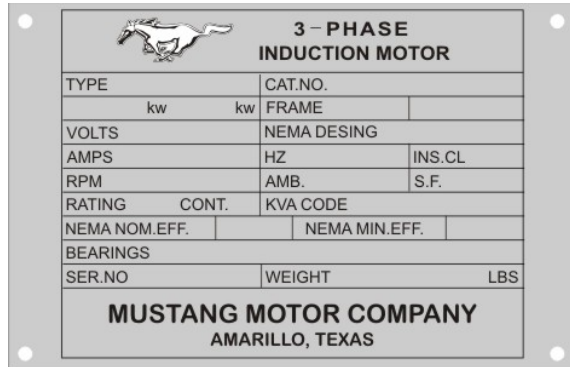


Creating a Layout for a Legend Plate in Vision Windows Engraving Software

©2006 By Robert Hensley-EngraversNetwork.com

This lesson covers the steps necessary to creating the layout for a legend plate in Vision Windows engraving software.

Engraving a Legend Plate



Our task is to engrave the legend plate in as shown to the left.

We will need to set up the individual lines in the Vision Windows engraving program.

Before we get started, let's learn some basics about engraving.

Engraving Terminology

Plate Width

The actual width of your engraving plate

Plate Height

The actual height of your engraving plate



Figure 01: Plate Width and Height

Baseline

The distance or measurement from the bottom of the text or object line from the top of the page



Figure 02: Baseline

A formula for determining the Baseline is

$$\text{BASELINE} = [(\text{PLATE HEIGHT} - \text{LETTER HEIGHT}) / 2] + \text{LETTER HEIGHT}$$

Creating a Layout for a Legend Plate in Vision Windows Engraving Software

©2006 By Robert Hensley-EngraversNetwork.com

Left Margin

The distance from the left side of the plate to the left edge that the lettering/object is allowed

Right Margin

The distance from the right side of the plate to the left edge that the lettering/object is allowed.

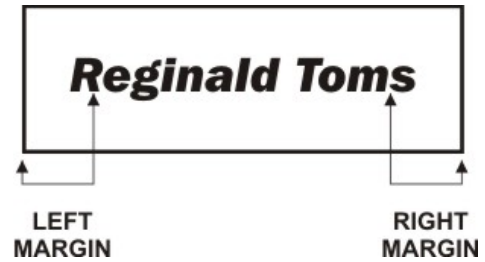


Figure 03: Plate Width & Height

Line Height

The height of the letter/object.



Figure 04: Line Height

Font Style

Also referred to as lettering or type style. The style of writing used. Once this field is selected our highlighted, use the space bar to toggle through the default fonts, loaded fonts or loaded logos.

Text Length

Actual width of lettering. Cannot exceed plate width minus margins.



Figure 05: Text Length

Justification

The horizontal positioning or alignment of text relevant to the margins. Text can be left justified, center justified, and right justified.



Figure 06: Justification

Creating a Layout for a Legend Plate in Vision Windows Engraving Software

©2006 By Robert Hensley-EngraversNetwork.com

Condensation

Each letter style has its own individual characteristics. One of these is the condensation. Below are several font styles. Notice that each font has a different letter width or condensation. All of these fonts are shown at their normal, or 100% condensation. Increasing the condensation stretches the letter and decreasing condenses or compresses the letter/font style.



Figure 07: Condensation

Condensation is when you have a line of fixed length and you try to compress a line of text that normally would exceed that length. VISION will automatically adjust the condensation and inter-character spacing (the spacing between each character) to make the text fit.

Condensation Mode

- **Equal Height Lines** condense all lines with the same height equally, at the condensation rate of the longest line.
- **All Lines Equally** allocates the condensation of the longest line to all of the other lines.
- **Individual Lines** will treat every line in the job separately.

Inter Char Spacing

The spacing between the characters in a line.

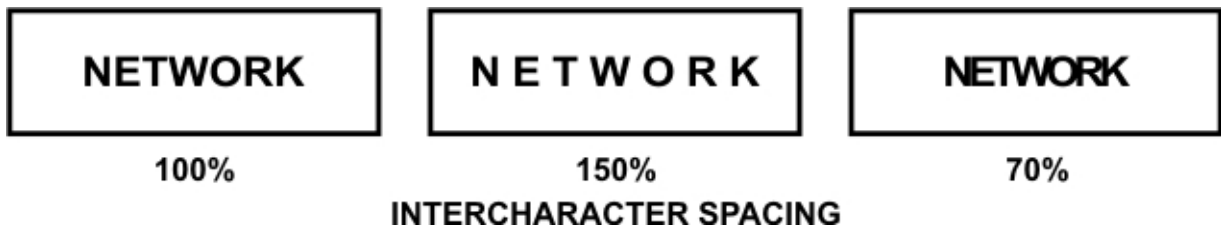


Figure 08: Inter Character Spacing

Italicization

This allows you to italicize or slant your text to the left or right. If you type a positive number in, the text will slant to the right by the amount of degrees entered. If you type a negative number in, the text will slant to the left by the amount of degrees entered.

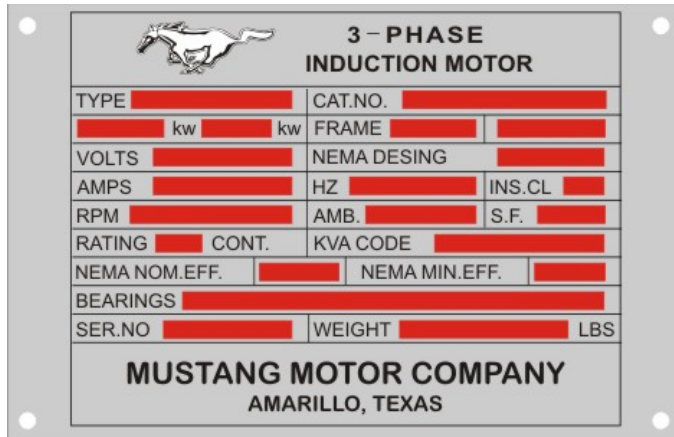


Figure 09: Italicization

Creating a Layout for a Legend Plate in Vision Windows Engraving Software

©2006 By Robert Hensley-EngraversNetwork.com

Examining Our Legend Plate



The example shown to the left is our plate with red squares that represent the area that we can engrave into. Since there are 21 red squares, we will need to have 21 lines in our engraving software.

In this example, the black line represents the plate



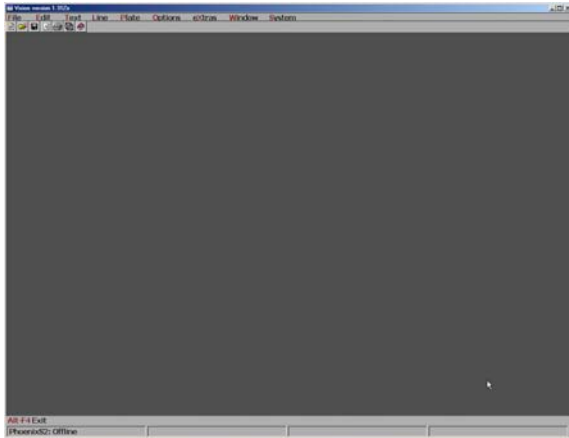
Each one of these red squares, or lines in our layout will require the input of four pieces of information – letter height, baseline, left margin, and right margin. Using a digital caliper is the best means for measuring the distances.

Creating a Layout for a Legend Plate in Vision Windows Engraving Software

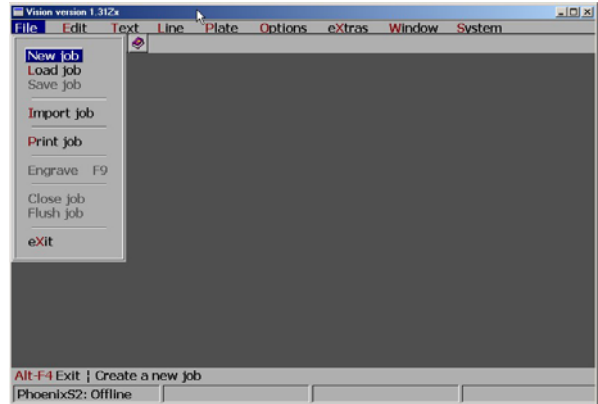
©2006 By Robert Hensley-EngraversNetwork.com

Getting Started in Vision – Initial Screen Layout

After you start the Vision engraving software from your Windows desktop, this is your initial screen. Note the 'status' at the bottom of this screen. VE-810; Off-line. The table used is a VE-810 and the table and program are not communicating, or 'off-line'. On your computer it should say 'your table': Waiting, where 'your table' is actual table you own (PHOENIX, VE810, VE1612, etc.)



Initial screen layout



Pull-down File Menu to Start New Job

To start a new job, use the mouse and click on File->New Job. The keyboard short cut is ALT+N. You are now ready to input the data for your new job.



Vision Screen with New Job

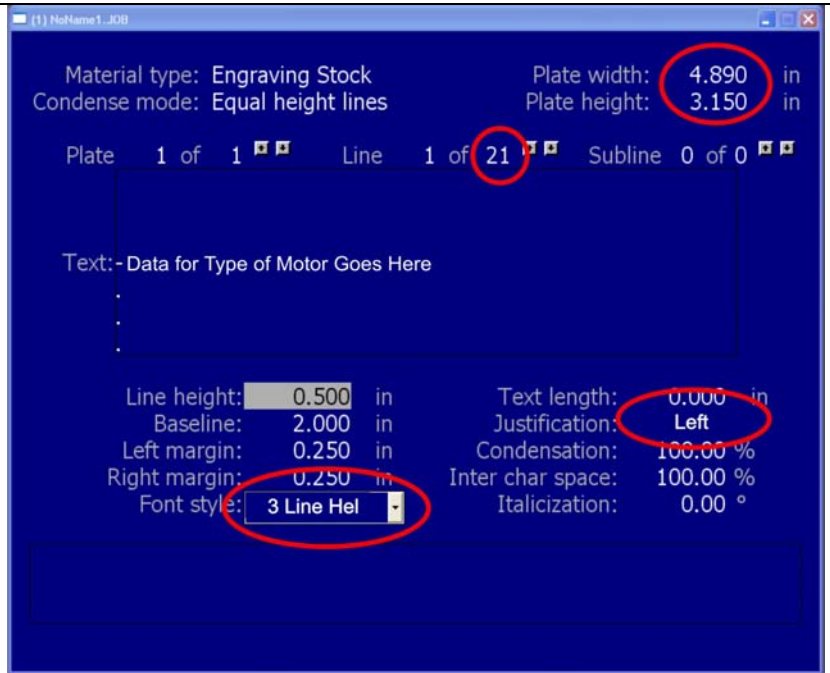
Creating a Layout for a Legend Plate in Vision Windows Engraving Software

©2006 By Robert Hensley-EngraversNetwork.com

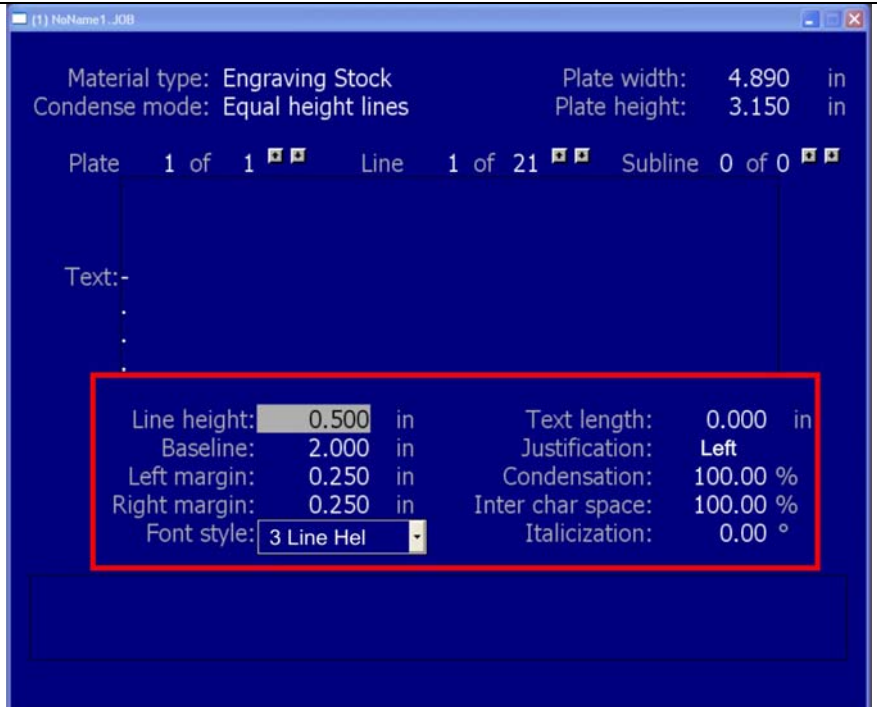
Entering the data into the Vision Windows program

Here are the basic steps for entering the data.

- 1.
2. Enter the plate height (4.89 for the width and 3.15 for the height)..
3. Click on 'Center' in the Justification. Hit the SPACEBAR and change it to Left.
4. In the Font Style drop down box, change to 3-Line Helvetica.
5. Enter the numbers of lines.



Note: You need to follow the exact order above. When you select 21 lines, it copies the Left Justification and the 3 Line Hel to each line. If you need to change the justification of an individual line, go to that line number (i.e. 3 of 21) and change the desired data for that line as shown in the red box below. You can change the line height, baseline, left margin, right margin, font style, text length, justification, condensation, inter char space, and italicization for each line.



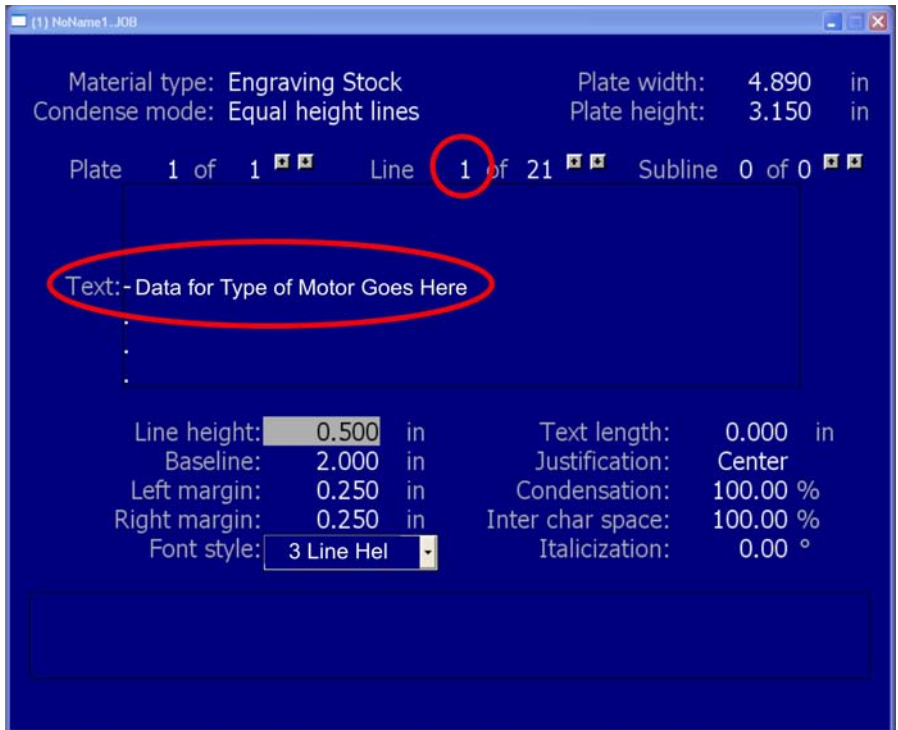
Creating a Layout for a Legend Plate in Vision Windows Engraving Software

©2006 By Robert Hensley-EngraversNetwork.com

Press F4 to get to Manual Edit.
Enter the Baseline, Line Height,
Left and Right Margins (ignore
depth), for each of the 21 lines.
Press Okay.



At the main screen, start typing in
the data that will appear on the
engraving plate.

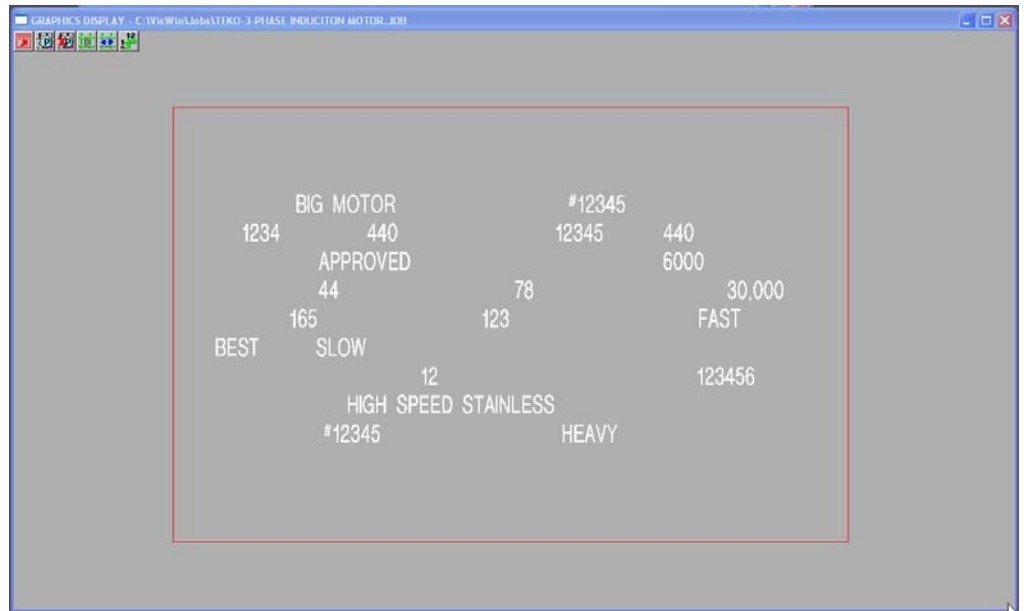


Creating a Layout for a Legend Plate in Vision Windows Engraving Software

©2006 By Robert Hensley-EngraversNetwork.com

Note if you get confused on the line you are type, note the line 1 of 21 in the example above. It means the Text line you are on is 1.

After you have entered the data for each line, press the F8 key to see your actual layout



If you need to adjust any of the measurements for the lines, you can do it in the F4 – Manual Edit screen, or go the main screen. Just make sure when you are on the main screen that you are on the correct line number.

